

CURVE DATA TABLE

CURVE	DETA. ANGLE	RADIUS	ARC LENGTH	TANGENT	CHORD LENGTH	CHORD BEARING
C1	1723.07°	70.00	51.58	25.39	51.58	S80°02'06"W
C2	1723.07°	200.00	60.89	20.59	60.45	S80°02'06"W
C3	1723.07°	230.00	69.78	25.16	69.52	S80°02'06"W
C4	36°55'49"	105.00	70.43	26.60	69.11	S52°07'42"W
C5	36°55'49"	155.00	90.55	47.05	88.86	S52°07'42"W
C6	37°44'00"	155.00	74.77	28.27	73.82	S49°44'49"W
C7	37°44'00"	165.00	91.39	46.90	90.22	S49°44'49"W
C8	36°52'54"	105.00	106.67	57.51	106.61	S52°07'42"W
C9	37°44'00"	105.00	58.15	29.84	57.41	S49°44'49"W

LINE DATA TABLE

LINE	LENGTH	BEARING	LINE	LENGTH	BEARING
L1	43.07	N89°48'09"E	L12	59.53	N83°22'15"E
L2	28.85	S85°48'09"E	L13	19.92	S84°43'32"E
L3	195.94	S79°17'15"E	L14	14.52	N78°05'08"E
L4	89.73	S29°58'12"E	L15	23.09	N89°43'27"E
L5	84.05	S8°01'32"W	L16	25.00	N89°43'27"E
L6	107.18	S02°03'39"W	L17	57.55	S88°43'37"W
L7	154.22	S37°03'19"E	L18	88.11	N88°43'37"E
L8	101.12	S79°14'33"E	L19	58.66	N88°43'37"E
L9	158.31	N78°29'17"E	L20	84.41	S32°54'49"W
L10	89.35	S84°37'55"E	L21	84.21	N52°40'02"W
L11	83.69	S18°36'09"W	L22	60.00	N52°21'01"W

AREA TABLE - PHASE I

PHASE I TOTAL AREA	16.06 ACRES
PHASE I LOT AREA	10.37 ACRES
PHASE I ROAD AREA	2.46 ACRES
PHASE I OPEN AREA	3.23 ACRES
TOTAL PROJECT AREA	15.51 ACRES
TOTAL OPEN AREA	19.86 ACRES
TOTAL BUILDABLE AREA	87.88 ACRES

SURVEYOR'S CERTIFICATE
 I, ARNOLD W. WOODSTENHULME, BEING A REGISTERED LAND SURVEYOR / ENGINEER IN THE STATE OF IDAHO, No. 2860, DO HEREBY CERTIFY THAT I DID CAUSE THE SURVEY OF THE TRACT OF LAND AS HEREIN PLATTED AND DESCRIBED.

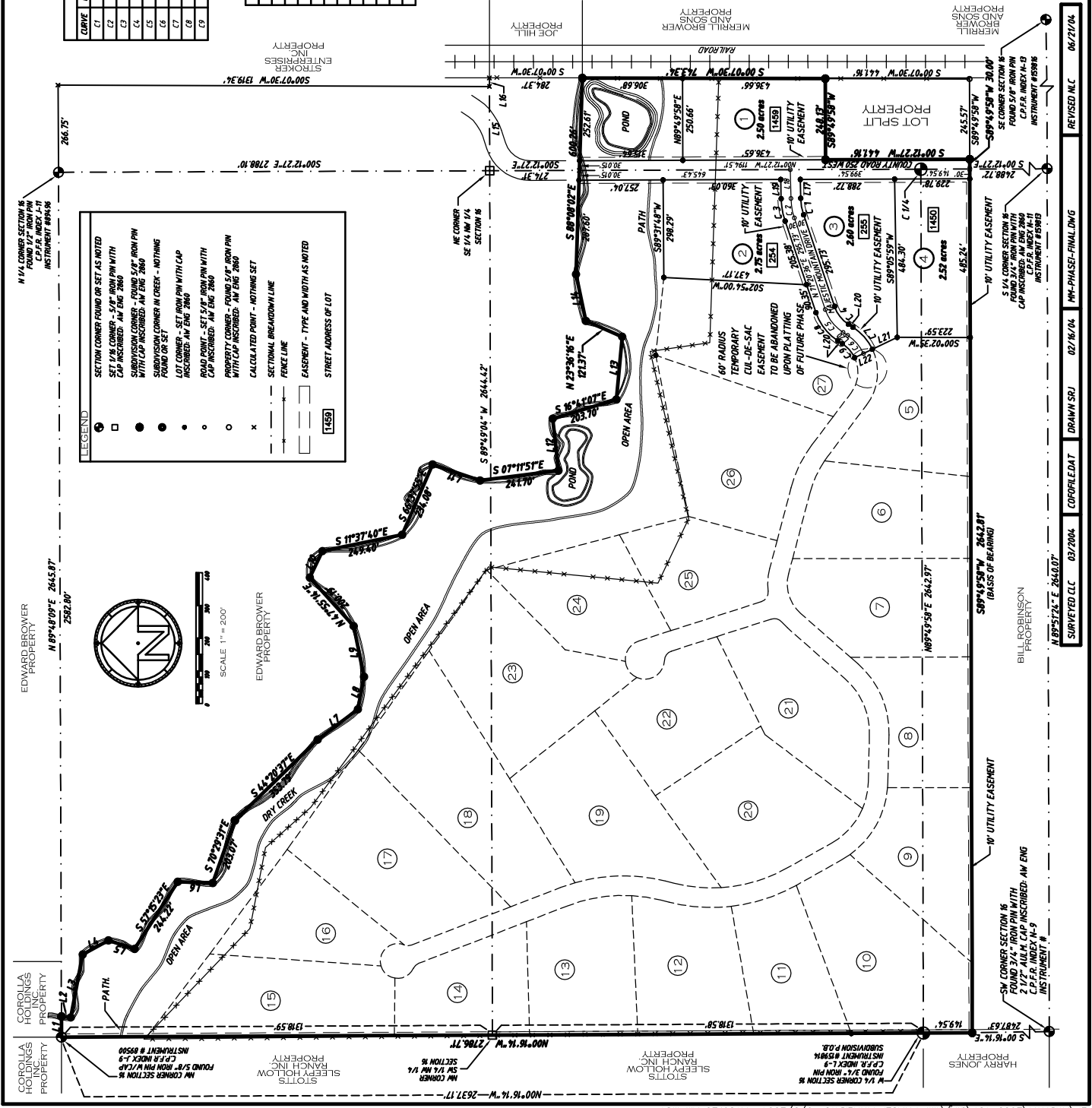
MASTER PLAN / FINAL PLAT FOR PHASE OF MAJESTIC MOUNTAIN RANCH SUBDIVISION

THE SW 1/4 NW 1/4, A PORTION OF THE SE 1/4 NW 1/4, A PORTION OF THE NW 1/4 NW 1/4, A PORTION OF THE NE 1/4 NW 1/4, A PORTION OF THE SW 1/4 NE 1/4 AND A PORTION OF THE N 1/2 SW 1/4, ALL OF SECTION 16, T1P. 7N, R1G. 45E, B.M., TETON COUNTY, IDAHO

QUARTER CIRCLE FOURTEEN, LLC
 (BEULAH BROOKER PRESIDENT)
 94.7 NORTH HIGHWAY 32
 FELT, IDAHO 83424
 (208) 455-2862
 (208) 477-2922 aw@quartercirclefourteen.com

AW Engineering
 255 South Main P.O. Box 89
 FULTON, IDAHO 83424
 (208) 477-2922 aw@quartercirclefourteen.com

PROJECT NO. 2003 - 81
 SHEET 2 OF 3
 SECTION 16



LEGEND

- SECTION CORNER FOUND OR SET AS NOTED
- SET 1/8 CORNER - 5/8" IRON PIN WITH CAP INCREASING AN ENG 2860
- SET 1/4 CORNER - 1/2" IRON PIN WITH CAP INCREASING AN ENG 2860
- SET 1/2 CORNER - 3/4" IRON PIN WITH CAP INCREASING AN ENG 2860
- SET 3/4 CORNER - 1" IRON PIN WITH CAP INCREASING AN ENG 2860
- SET 5/8 CORNER - 5/8" IRON PIN WITH CAP INCREASING AN ENG 2860
- SET 1" CORNER - 1" IRON PIN WITH CAP INCREASING AN ENG 2860
- ROAD POINT - SET 5/8" IRON PIN WITH CAP INCREASING AN ENG 2860
- PROPERTY CORNER - FOUND 5/8" IRON PIN WITH CAP INCREASING AN ENG 2860
- PROPERTY CORNER - FOUND 1/2" IRON PIN WITH CAP INCREASING AN ENG 2860
- PROPERTY CORNER - FOUND 1/4" IRON PIN WITH CAP INCREASING AN ENG 2860
- PROPERTY CORNER - FOUND 3/4" IRON PIN WITH CAP INCREASING AN ENG 2860
- PROPERTY CORNER - FOUND 1" IRON PIN WITH CAP INCREASING AN ENG 2860
- CALCULATED POINT - NOTHING SET
- SECTIONAL BREAKDOWN LINE
- FENCE LINE
- EASEMENT - TYPE AND WIDTH AS NOTED
- STREET ADDRESS OF LOT



SCALE 1" = 200'

REVISED N/C 06/21/04
 DRAWN SRJ 02/16/04 MM-PHASE1-FINAL.DWG
 SURVEYED CLC 03/20/04
 SURVEYED CLC 03/20/04